



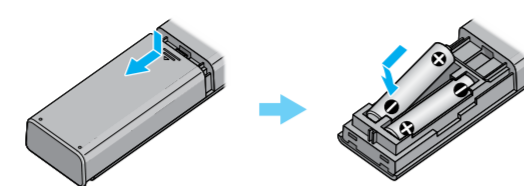
Home Theatre System
Startup Guide
入門指南

HT-RT40

Supplied accessories
附件

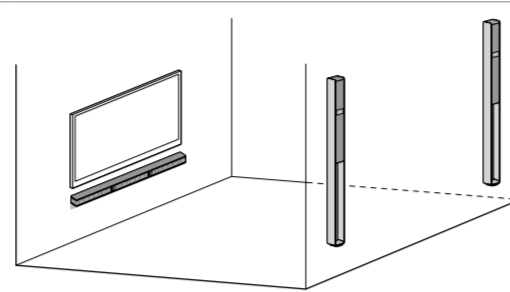


To insert batteries
插入電池



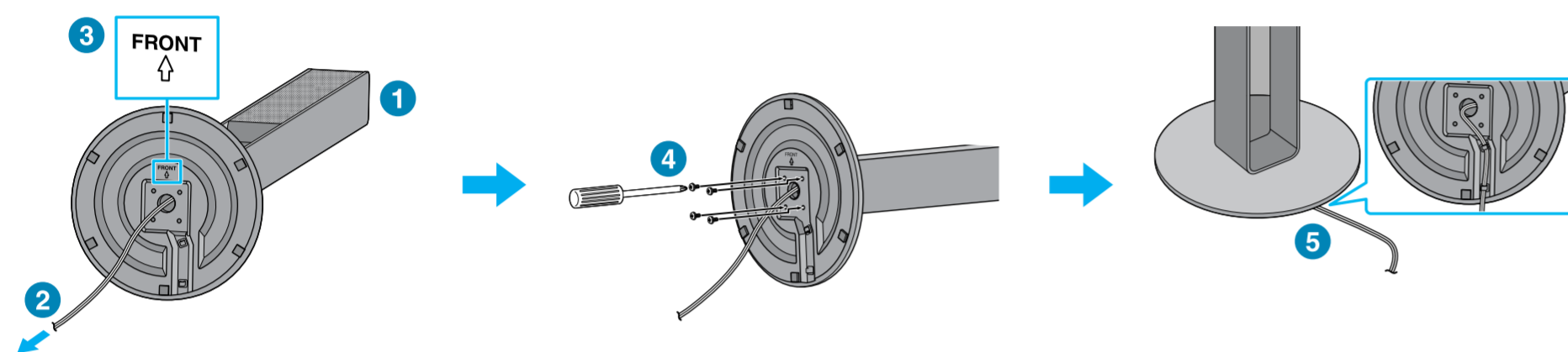
To mount the Bar Speaker and the Surround Speakers (SUR L/SUR R) on a wall
Refer to the supplied Operating Instructions.

若要將條形揚聲器和環繞揚聲器 (SUR L/SUR R) 安裝在牆上，請參閱附帶的使用說明書。



1 Installing the Surround Speakers (SUR L/SUR R) on the floor
將環繞揚聲器 (SUR L/SUR R) 安裝在地板上

Spread a cloth on the floor to avoid damaging the floor when you assemble the surround speakers.
組裝環繞揚聲器時，請在地板上鋪一塊布以防損壞地板。

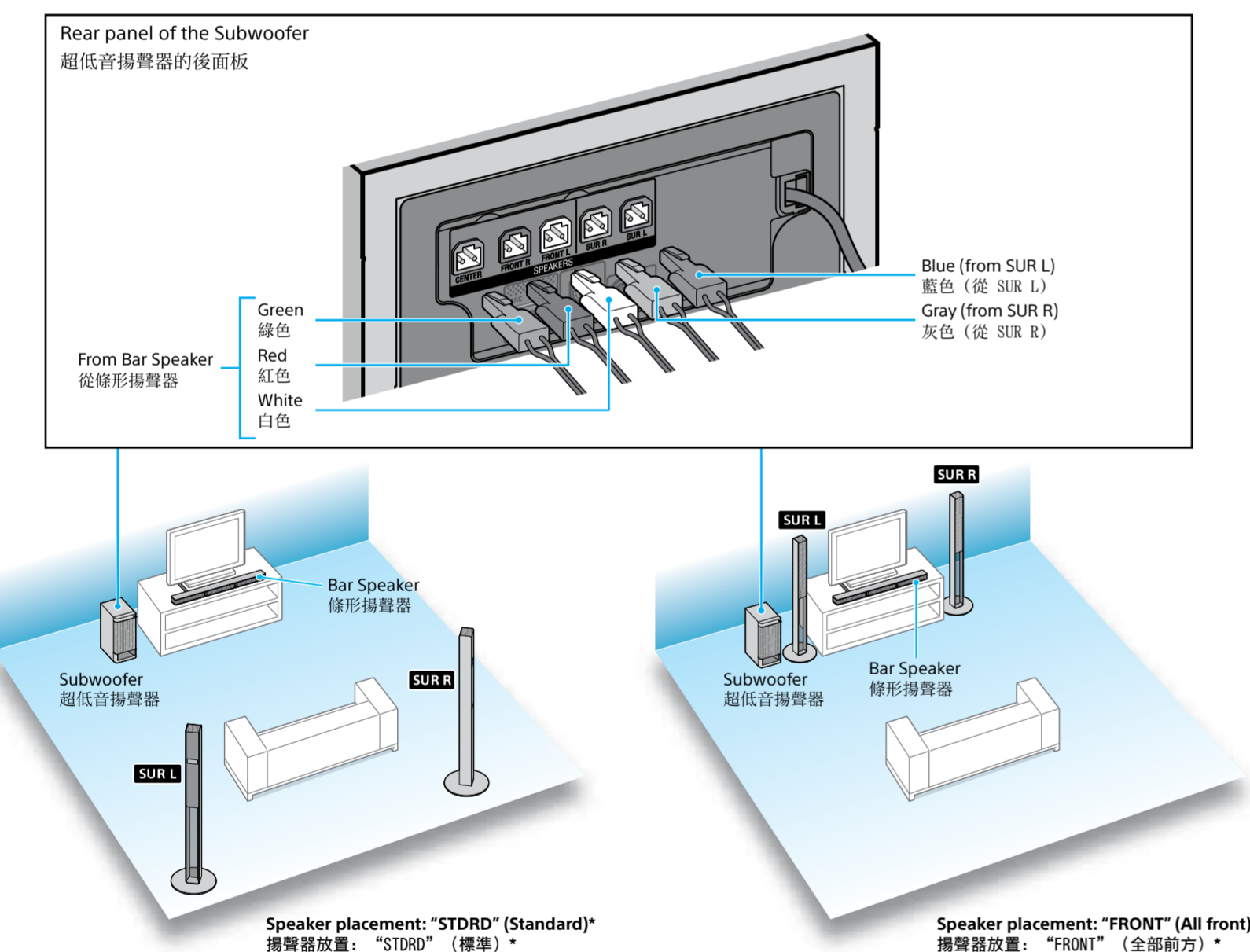


- Place the surround speaker on the floor with the front side facing up.
- Thread the speaker cord from the surround speaker through the hole in the speaker base.
- Adjust the position of the speaker base by aligning the "FRONT" facing up.
- Secure the speaker base and the surround speaker with four screws.
- Slide the speaker cord into the slot at the speaker base.

- 將環繞揚聲器放置在地板上，正面朝上。
- 將環繞揚聲器的揚聲器線穿過揚聲器底座中的孔。
- 通過將 "FRONT" 朝上來調節揚聲器底座的位置。
- 使用四個螺絲來固定揚聲器底座和環繞揚聲器。
- 將揚聲器線滑動入揚聲器底座的插槽內。

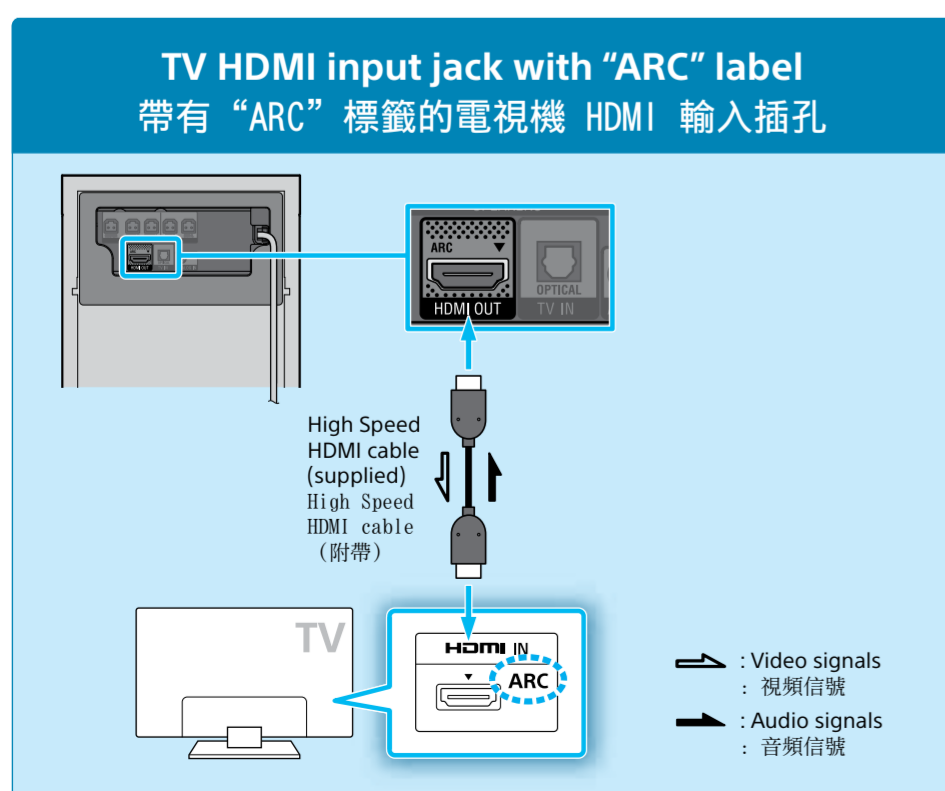
2 Connecting the speakers
連接揚聲器

Connect the speaker cords to match the color of the SPEAKERS jacks on the rear panel of the Subwoofer.
將揚聲器線對應超低音揚聲器後面板上的 SPEAKERS 插孔的顏色進行連接。

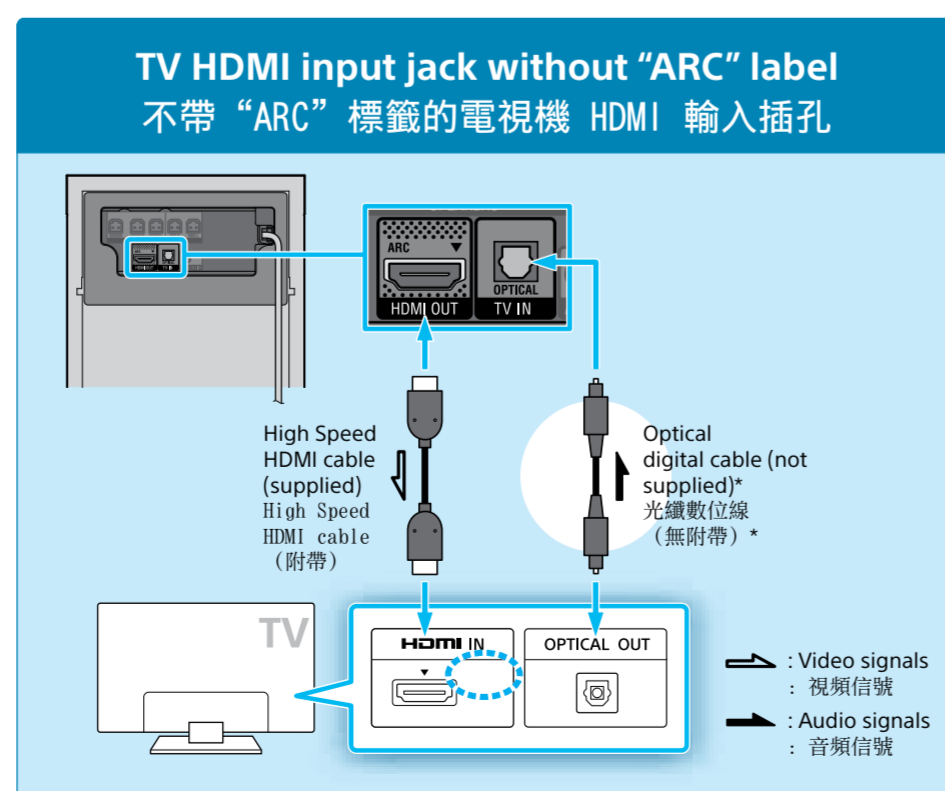


* To select speaker placement, refer to "Using the setup display" in the supplied Operating Instructions.
* 若要選擇揚聲器放置，請參閱附帶的使用說明書中的 "使用設定顯示"。

3 Connecting with a TV
與電視機連接

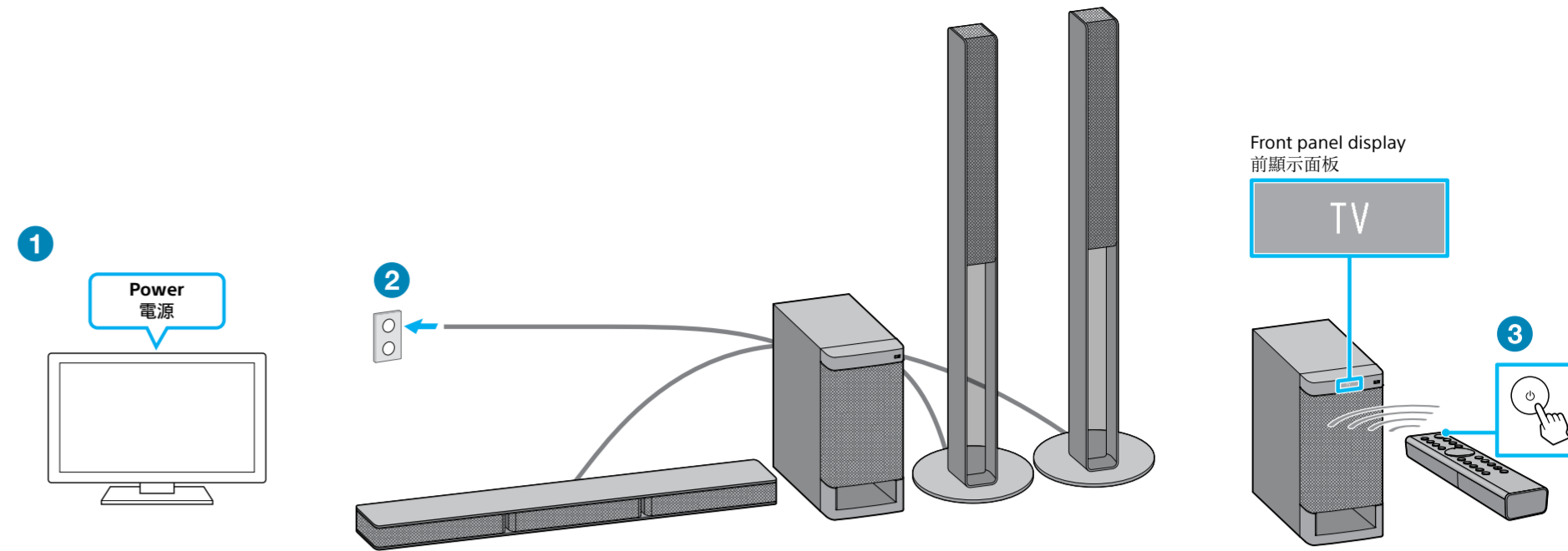


* If your TV does not support ARC (Audio Return Channel) function, connect an optical digital cable (not supplied) to listen to the TV sound.
* 如果電視機不支援 ARC (音頻回傳信道) 功能，請連接光纖數位線 (無附帶) 以聆聽電視機聲音。
Note:
• Make sure that the HDMI cable is firmly inserted.
• To view the USB content list on the TV screen, make sure you connect the system to the TV using HDMI cable.



* 如果電視機不支援 ARC (音頻回傳信道) 功能，請連接光纖數位線 (無附帶) 以聆聽電視機聲音。
註:
• 請確保 HDMI 連接線已牢固插入。
• 若要在電視機屏幕上查看 USB 內容列表，請確保使用 HDMI 連接線將系統連接至電視機。

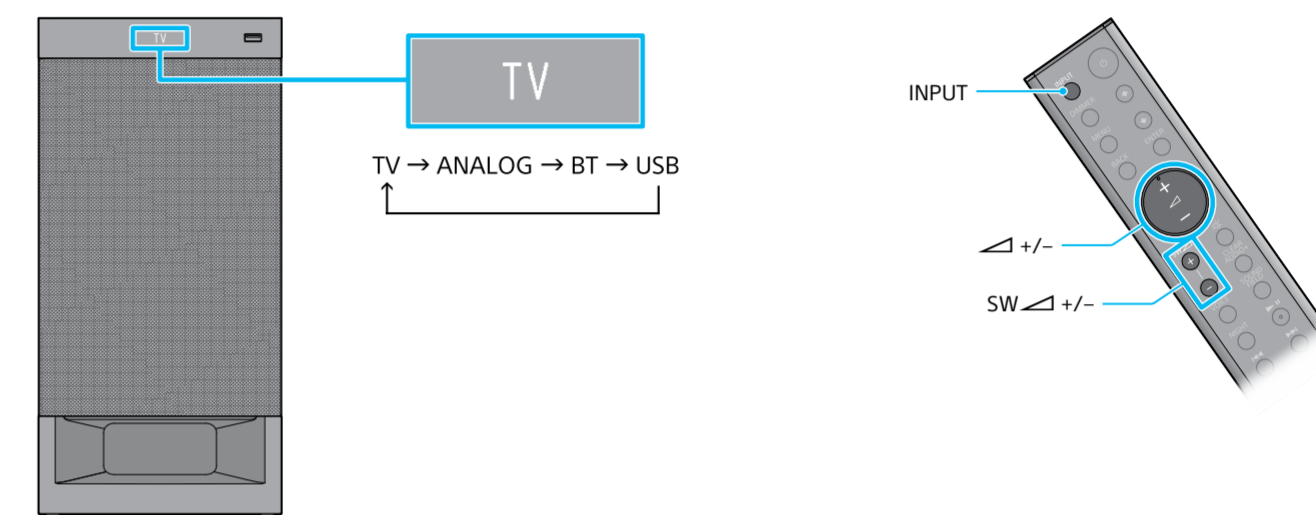
4 Turning on the system
開啓系統



- Turn on the TV.
- Connect the AC power cord (mains lead) of the Subwoofer to the wall outlet (mains).
- Press \odot (power). The front panel display lights up.

- 開啓電視機。
- 將超低音揚聲器的交流電源線連接至牆壁插座 (幹線)。
- 按 \odot (電源)。前顯示面板亮起。

5 Listening to the sound
聆聽聲音



Press INPUT repeatedly until the device you want appears in the front panel display. Then, press \triangle +/- repeatedly to adjust the system volume and press SW \triangle +/- repeatedly to adjust the Subwoofer volume.
To listen to TV audio, select the program you want using the TV remote control.

重複按 INPUT 直至您的裝置出現在前顯示面板。然後，重複按 \triangle +/- 以調節系統音量，重複按 SW \triangle +/- 以調節超低音揚聲器音量。
想要聆聽電視機音頻，使用電視機遙控器選擇您要的節目。

Setup completed! Enjoy!

設定完成！享受吧！

Please refer to the supplied Operating Instructions about the sound effects, and other functions.

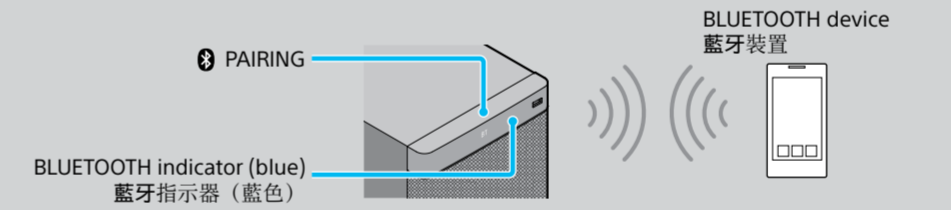
有關音響效果及其它功能，請參閱附帶的使用說明書。



Listening to music from a BLUETOOTH device
聆聽來自藍牙裝置的音樂

Refer to the supplied Operating Instructions for details on other Bluetooth settings.
有關其它藍牙設定的詳情，請參閱附帶的使用說明書。

When pairing a BLUETOOTH device
配對藍牙裝置時



- Place the BLUETOOTH device within 1 meter from the Subwoofer.
- Touch PAIRING on the Subwoofer. The BLUETOOTH indicator (blue) flashes quickly (●●●) during BLUETOOTH pairing.
- Turn on BLUETOOTH function on the BLUETOOTH device and select "HT-RT40".
- When the BLUETOOTH connection is established, the BLUETOOTH indicator (blue) lights up (●).
- Start playback on the BLUETOOTH device.
- Adjust the volume.

- 將藍牙裝置放在離超低音揚聲器 1 米內之處。
- 觸摸超低音揚聲器上的 PAIRING 。藍牙配對時藍牙指示器 (藍色) 快速閃爍 (●●●)。
- 開啓藍牙裝置上的藍牙功能，然後選擇 "HT-RT40"。
- 當藍牙連接建立時，藍牙指示器 (藍色) 亮起 (●)。
- 開始在藍牙裝置上播放。
- 調節音量。

When using One-touch connection (NFC)
使用一觸式連接 (NFC) 時



- Hold the mobile device near to the N-Mark on the Subwoofer until the mobile device vibrates.
- When the BLUETOOTH connection is established, the BLUETOOTH indicator (blue) lights up (●).
- Start playback on the mobile device.
- Adjust the volume.

- 將移動裝置靠近超低音揚聲器上的 N-Mark 直至移動裝置振動。
- 當藍牙連接建立時，藍牙指示器 (藍色) 亮起 (●)。
- 開始在移動裝置上播放。
- 將藍牙裝置備有內置 NFC 功能的移動裝置 (操作系統: Android 2.3.3 或更新, Android 3.x 除外)
- 調節音量。

Sony | Music Center

A dedicated App for this model is available on both Google Play™ and App Store.
Search for "Sony | Music Center" and download the free App to find out more about the convenient features.

可從 Google Play™ 和 App Store 獲取此型號的專用應用程序。
搜索 "Sony | Music Center" 並下載免費的應用程序以獲取更多有關方面的功能。

Connecting other devices with the TV (optional)
將其它裝置與電視機 (任選) 連接

Sound from other devices can be output to the system through the TV.
To connect other devices with your TV, refer to the operating instructions of your TV.
其它裝置的聲音通過電視機輸出至系統。
想要將其它裝置與您的電視機連接，請參閱您的電視機的使用說明書。

