



Television

Operating Instructions

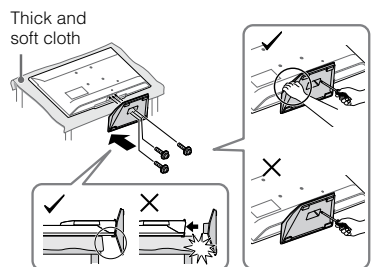
Checking the accessories

- Table-Top Stand (1)*
- Fixing screws for Table-Top Stand (M4 x 16) (3)
- Remote control (1)
- AC power cord (mains lead) (1)
- Size AAA batteries (R03 type) (2)
- Operating Instructions (this manual) and other documents

* Refer to the supplied Table-Top Stand leaflet to assemble the Table-Top Stand.

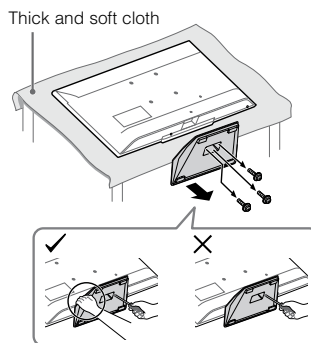
1: Attaching the Table-Top Stand

- If using an electric screwdriver, set the tightening torque at approximately 1.2 N·m (12 kgf·cm).



Detaching the Table-Top Stand from the TV

- Do not remove the Table-Top Stand for any reason other than to wall-mount the TV.



2: Mounting the TV on the wall

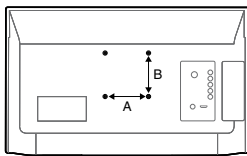
To Customers
Sufficient expertise is required for installing this product. Be sure to subcontract the installation to Sony dealers or licensed contractors and pay special attention to safety during the installation. Sony is not liable for any damages or injury caused by mishandling or improper installation, or installing any other than the specified product. Your Statutory Rights (if any) are not affected.

To Sony Dealers and Contractors
Sufficient expertise is required for installing this product. Be sure to read this instruction manual thoroughly to do the installation work safely. Sony is not liable for any damages or injury caused by mishandling or improper installation.

Precautions

- Detach the Table-Top Stand from the TV. For details, refer to (Detaching the Table-Top Stand from the TV).

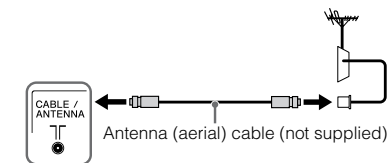
Wall mount location



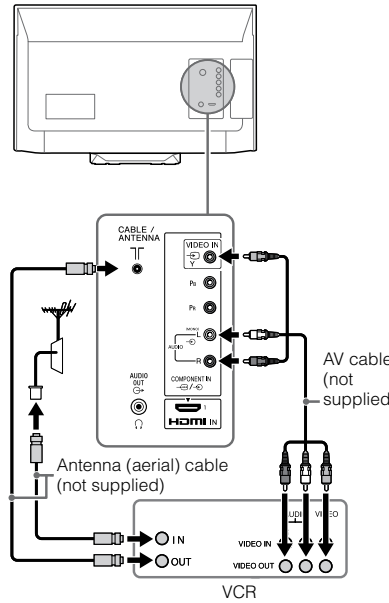
Dimension	A (mm)	B (mm)
22	100	100
24	100	100

3: Connections

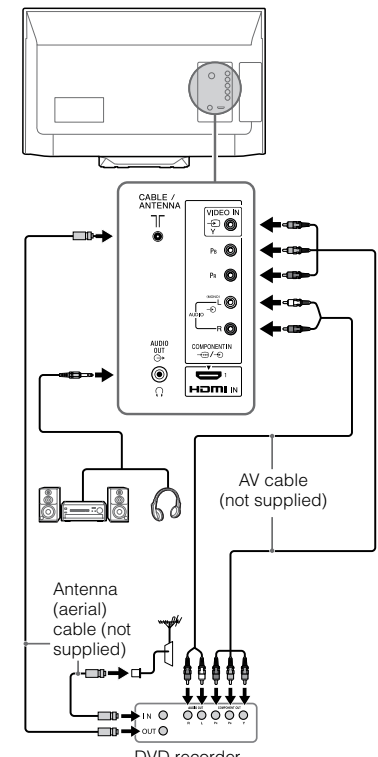
Connecting an antenna (aerial)/cable



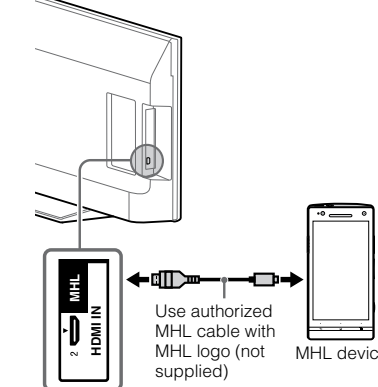
Connecting an antenna (aerial)/cable and VCR



Connecting audio/video devices



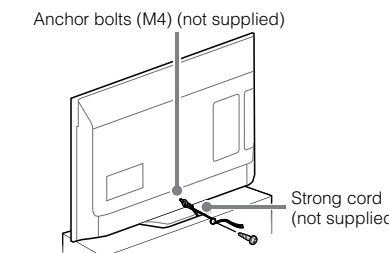
Connecting MHL device (KLV-24P422B only)



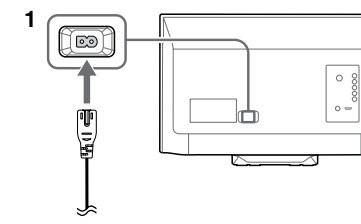
The MHL (Mobile High-Definition Link) enables the TV to communicate with a connected MHL-compatible device. The TV can charge the connected MHL-compatible device while playing photo/music/video from it. You can use the TV remote control to control the connected MHL-compatible device.

- If "Auto Input Change (MHL)" is set to "On", the TV automatically switches to HDMI 2 / MHL from other input when MHL-compatible device is connected to HDMI IN 2 / MHL jack. The availability of "Auto Input Change (MHL)" depends on whether the MHL-compatible device can support this feature.
- You can continue normal usage of the connected MHL-compatible device (such as receiving calls) depending on its capability.
- Some remote control functions may not be available depending on features of the connected MHL-compatible device. Please refer to the device manual for details.
- This product is officially MHL-certified for operation with other MHL-certified devices. If you encounter any problems when using the MHL function, please consult the device manufacturer for support.

4: Preventing the TV from toppling over



5: Performing the initial setup



- When the TV is in standby mode (the standby indicator on the TV front panel is red), press the standby button on the remote to turn on the TV.
- Make sure that the TV is completely turned off before unplugging the AC power cord (mains lead). Unplugging the AC power cord while the TV is turned on may cause the TV to malfunction.



- Follow the instructions on the screen.
- You can also tune channels manually.
- Language options vary depending on model.
- Select "Home" from "Location" for the best TV settings to use the TV in the home.

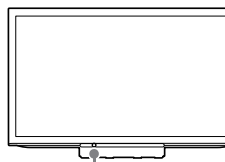
3 To select TV position:



- To exit "Set-up" menu: HOME

Overview of the TV controls and indicators

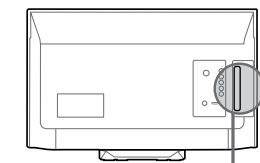
Front View



Power/Standby indicator

- Lights up in red when in standby.
- Lights up in green when the TV is turned on.
- Flashes while the remote is being operated.

Back View



Power

- Turns the TV on or switch to standby mode.

CH/INPUT

- Press button until "Programme +/-" appears and selects channels with Volume button.
- Press button until "Input select" appears and selects input source with Volume button.

Volume

- Adjusts volume.
- Moves through options up or down when selecting channels or input source.

BRAVIA

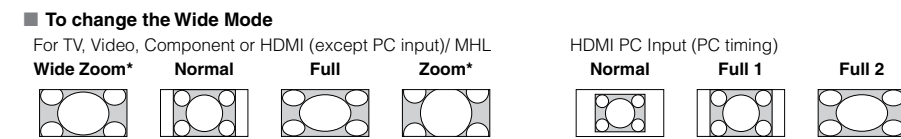
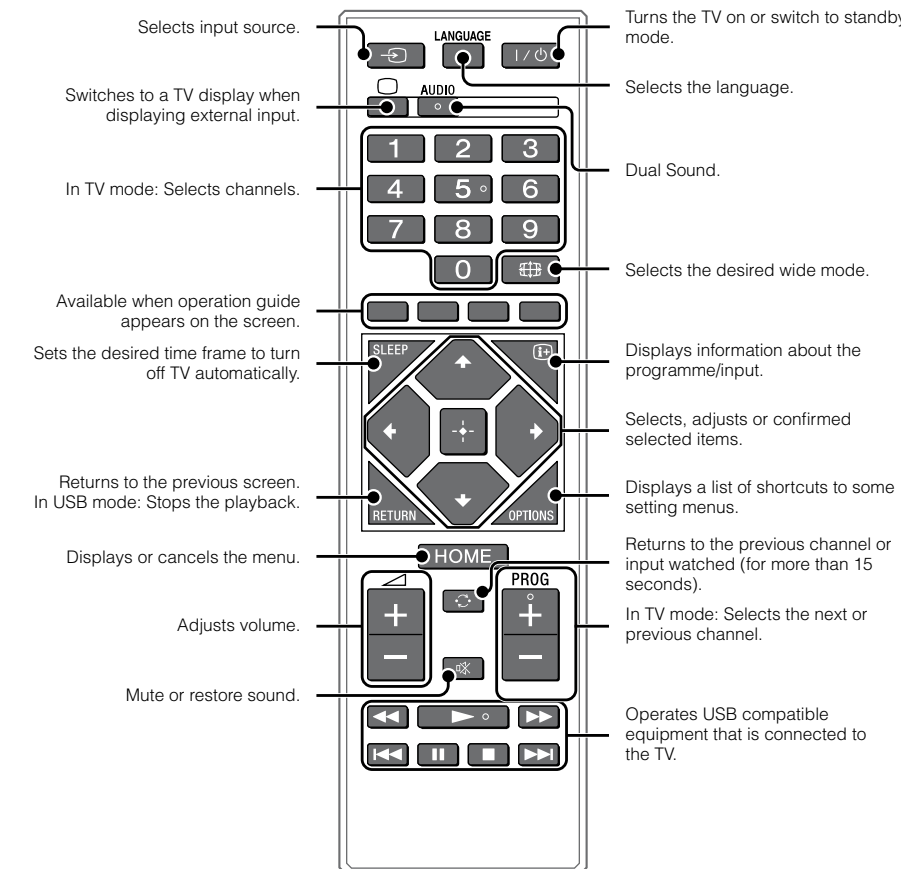
Customer support
http://www.sony-asia.com/support

http://www.sony.net/

© 2014 Sony Corporation Printed in China

KLV-24P422B / 24P412B / 22P402B

Overview of the remote



- Parts of the top and bottom of the picture may be cut off.
- Some options may not be available depending on the signal source.

Introduction
Thank you for choosing this Sony product. Before operating the TV, please read this manual thoroughly and retain it for future reference.

- The illustrations used in this manual may differ depending on your TV model.
- The illustrations of the remote control used in this manual are of the RM-GAG25 unless otherwise stated.
- Before operating the TV, please read Safety Information. Retain this manual for future reference.

Location of the identification label
Labels for TV Model No., Power Supply rating (in accordance with applicable safety regulation) and Manufacturing date are located on the rear of the TV.

Disposal of the TV set
Disposal of Old Electrical & Electronic Equipment (Applicable in the European Union and other European countries with separate collection systems)

This symbol is on the remote control.

Trademark information
The terms HDMI and HDMI High-Definition Multimedia Interface, and the HDMI Logo are trademarks or registered trademarks of HDMI Licensing LLC in the United States and other countries.

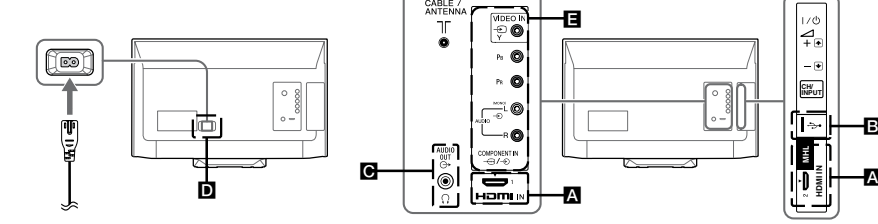
- Manufactured under license from Dolby Laboratories. Dolby and the double-D symbol are trademarks of Dolby Laboratories.
- "BRAVIA" and BRAVIA are trademarks of Sony Corporation.
- MHL, Mobile High-Definition Link and the MHL Logo are trademarks or registered trademarks of MHL Licensing, LLC.
- Blu-ray Disc is a trademark.



Viewing pictures from the connected equipment

Turn on the connected equipment, then press the remote control or CH/INPUT on the TV to display the connected equipment list.

Rear View



- *1 Terminals and labels may vary depending on TV model.
- HDMI IN 2 supports only KLV-24P412B.
- HDMI IN 2 / MHL supports only KLV-24P422B.

A HDMI IN 1, HDMI IN 2 / MHL and HDMI IN 2 (Home Theatre systems, Camcorder, Blu-ray Disc player, DVD player, PC with HDMI output and Mobile device).
Connect to the HDMI IN jack if the equipment has an HDMI jack. If the equipment is compatible with MHL, connect the MHL jack of the equipment to the HDMI IN 2 / MHL jack through a MHL - HDMI cable (not supplied).

- The HDMI jacks can support PC timing in HDMI PC mode. Refer to (PC input signal reference chart for HDMI IN 1, 2) next to "PC settings".
- Be sure to use only an authorized HDMI cable bearing the HDMI logo, or an authorized MHL cable bearing the MHL logo.

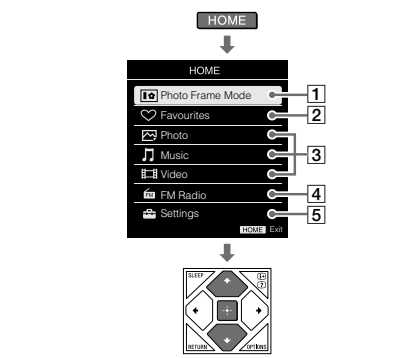
B - (Digital still camera, Camcorder, USB storage media)
Access photo/music/video files stored on a USB device.

C AUDIO OUT (Stereo systems, Headphone)
Connect with an audio cable or headphones. You can listen to TV sound through your stereo system or headphones. You can select "Variable" or "Fixed" in the "Audio Out" menu.

D AC IN 110 V ~ 240 V AC, 50/60 Hz

E VIDEO IN (COMPONENT IN/AUDIO -) (DVD player, VCR, Video game equipment, S VHS/Hi8/DVC camcorder, DVD player with component output)
Connect to the VIDEO IN jack and the AUDIO jack. If you connect mono equipment, connect to the L (MONO) jack. For better picture quality, component connection is recommended if your DVD player has a component video output. Connect to the COMPONENT IN jacks.

Using Menu Functions



To exit Home menu: HOME

1 Photo Frame Mode (KLV-24P422B only)
Display Photo, Music and Clock calendar at the same time.

To enter Photo Frame Mode

To exit Photo Frame mode: HOME

To select Photo/Music

To select Display Mode

To exit Home menu: HOME

To select Photo/Music/Video

To exit Home menu: HOME

To select Photo/Music/Video

To exit Home menu: HOME

To select Photo/Music/Video

To exit Home menu: HOME

To select Photo/Music/Video

To exit Home menu: HOME

2 Favourites

Store up to 18 channels or external inputs.

To add a current channel or external inputs into Favourites list

To watch a channel or external input

To exit Favourites List

When you run the "Auto Tuning", only the programme channels in your Favourites list will be cleared.

Play back photo/music/video files via USB devices.

Side View

To exit Home menu: HOME

To select Photo/Music/Video

To exit Home menu: HOME

To select Photo/Music/Video

To exit Home menu: HOME

To select Photo/Music/Video

To exit Home menu: HOME

To select Photo/Music/Video

To exit Home menu: HOME

To select Photo/Music/Video

To exit Home menu: HOME

To select Photo/Music/Video

To exit Home menu: HOME

To select Photo/Music/Video

To exit Home menu: HOME

To select Photo/Music/Video

To exit Home menu: HOME

To select Photo/Music/Video

To exit Home menu: HOME

To adjust the picture and sound setting (Video)

When playing video

"Picture" / "Sound"

To play a photo as slideshow (Photo)

To stop slideshow: "Stop Slideshow"

To exit Favourites List

When you run the "Auto Tuning", only the programme channels in your Favourites list will be cleared.

Play back photo/music/video files via USB devices.

Side View

To exit Home menu: HOME

To select Photo/Music/Video

To exit Home menu: HOME

To select Photo/Music/Video

To exit Home menu: HOME

To select Photo/Music/Video

To exit Home menu: HOME

To select Photo/Music/Video

To exit Home menu: HOME

To select Photo/Music/Video

To exit Home menu: HOME

To select Photo/Music/Video

To exit Home menu: HOME

To select Photo/Music/Video

To exit Home menu: HOME

To select Photo/Music/Video

To exit Home menu: HOME

To select Photo/Music/Video

USB Video format

Extension	Container	Video Codec	Audio Codec
.avi	AVI	MPEG1 MPEG2 XviD MPEG4 H.264 MJPEG	PCM AC3 MPEG1 Layer1/2 MPEG2 AAC MPEG4 AAC MPEG4 HE-AAC WMA V8 MP3
.wmv .asf	ASF	WMV9 Xvid MPEG4 VC-1	MP3 WMA V8
.mp4 .mov .3gp	MP4	MPEG4 H.264 H.263 MJPEG	MPEG1 Layer1/2 MP3 MPEG2 AAC MPEG4 AAC MPEG HE-AAC
.mkv	MKV	WMV9 MPEG4 H.264 VC-1	PCM MP3 MPEG1 Layer1/2 MPEG2 AAC MPEG4 AAC MPEG4 HE-AAC AC3 WMA V8
.mpeg .mpe .vob .vcd	MPEG1	MPEG1	MPEG1 Layer1/2 MP3 AC3
.ts .m2ts	MPEG2TS	MPEG1 MPEG2	MPEG1 Layer1/2 MP3 MPEG2 AAC MPEG4 HE-AAC AC3 MPEG4 AAC

USB Music format

Extension	Audio Codec
.mp3	MPEG1 Audio Layer 3
.wma	WMA V8
.wav	LPCM

USB Photo format

Extension	Image Codec
.jpg .jpeg .jpe	JPEG

DCF2.0 or EXIF2.21 supported.

- Playback of the above file formats is not guaranteed.
- The USB device supports FAT16, FAT32 and NTFS.

